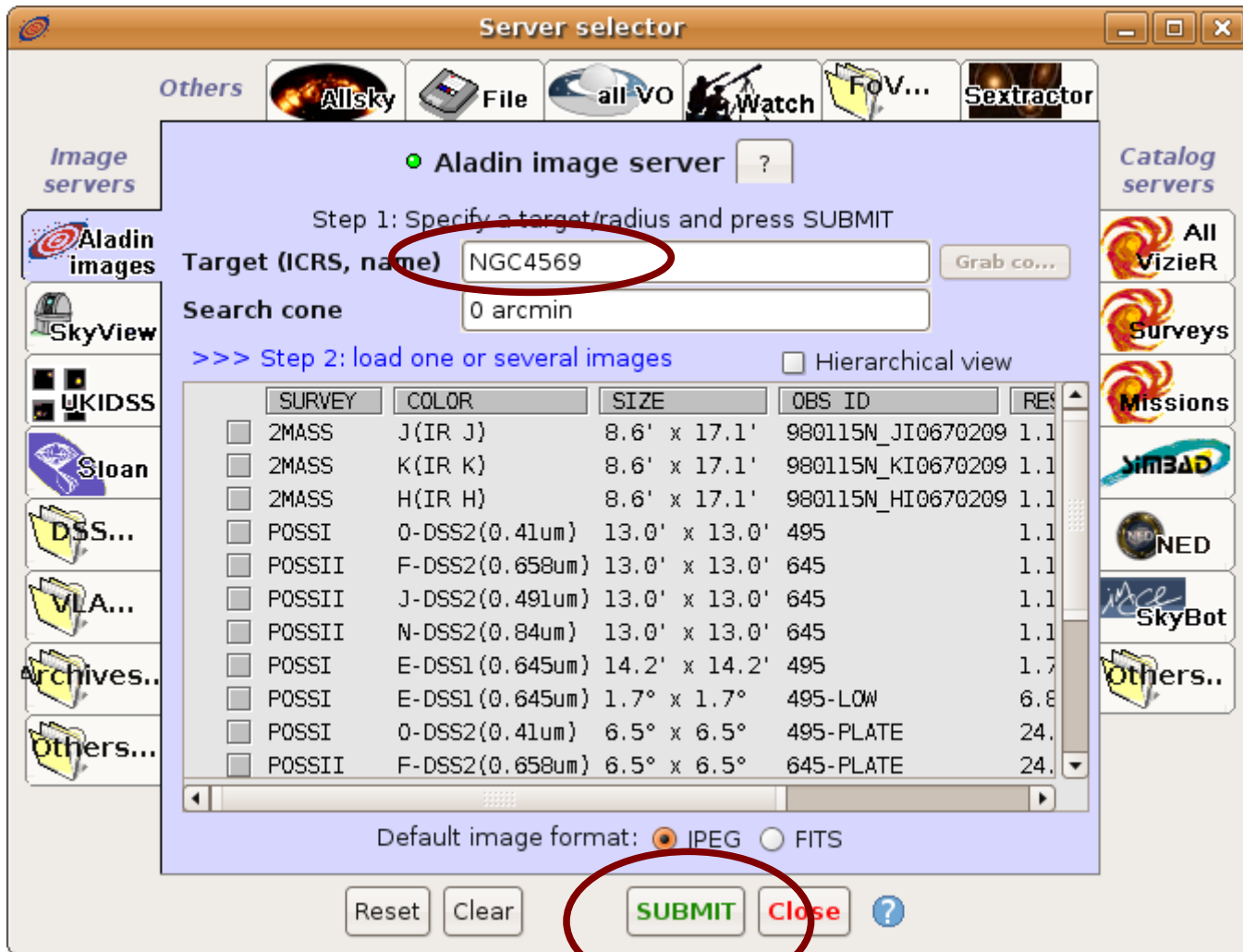


# The Aladin ALMA footprint

Bernd Vollmer & Thomas Boch  
CDS, Observatoire de Strasbourg  
13.07.2012

Select your favorite object in the Aladin Server selector



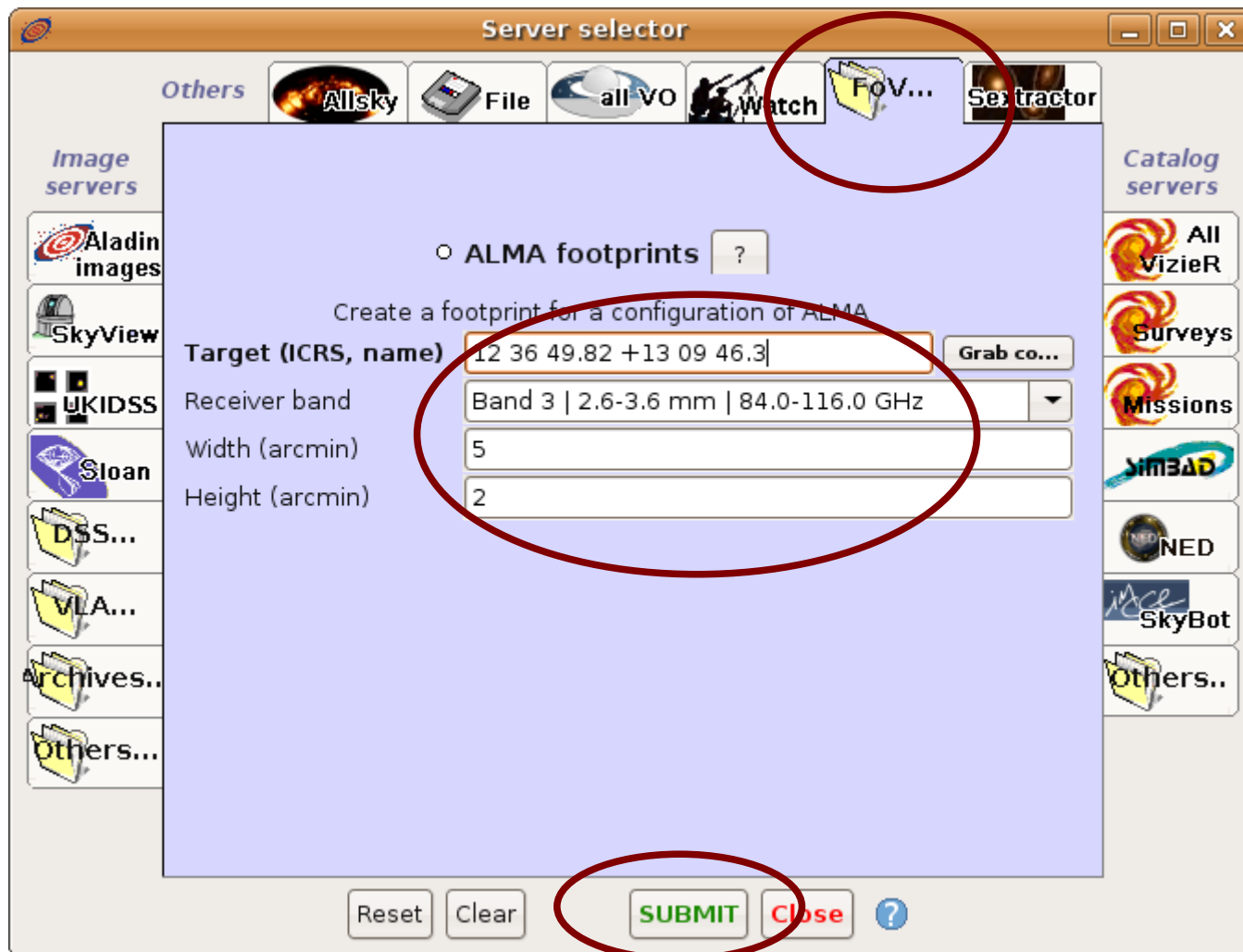
# Load the field of view (FoV)

The screenshot displays the Aladin v7.5 software interface. The main window shows a grayscale image of a galaxy, likely NGC 4414, with a red crosshair marking a point in the central region. The interface includes a menu bar at the top with options: File, Edit, Image, Catalog, Overlay, Tool, View, Interop, and Help. The 'File' menu is open, listing various actions such as 'Open...', 'Open local file...', 'Open URL...', 'All sky', 'Load astronomical image', 'Load catalog', 'Load from the Virtual Observatory...', 'Load instrument FoV...', 'Save...', 'Save the current view...', 'Export the current view (EPS)...', 'Export planes (FITS,VOTable,...)', 'Backup the stack...', 'Print...', 'New Aladin window...', and 'Quit'. The 'Load instrument FoV...' option is highlighted. On the right side, there is a toolbar with icons for select, pan, zoom, dist, phot, draw, tag, filter, cross, xcy, rgb, assoc, crop, cont, pcal, prop, and del. Below the toolbar, there is a text box that reads: 'Imagine your eye looking through a stack of planes. Each plane contains its own data set: image, catalog, graphical overlays... You see the combination of them. Use File->Open for discovering all other data, or clic & drag your own files.' At the bottom right, there is a panel for 'POSSII-J-DSS2.6' with sliders for 'size', 'op...', and 'zoom', and a small thumbnail image of the galaxy with dimensions '12.9' x 12.9''. The bottom status bar shows '(c) 2012 UDS/CNRS - by CDS - Distributed under GNU GPL v3' and '0 sel / 0 src 44Mb'.

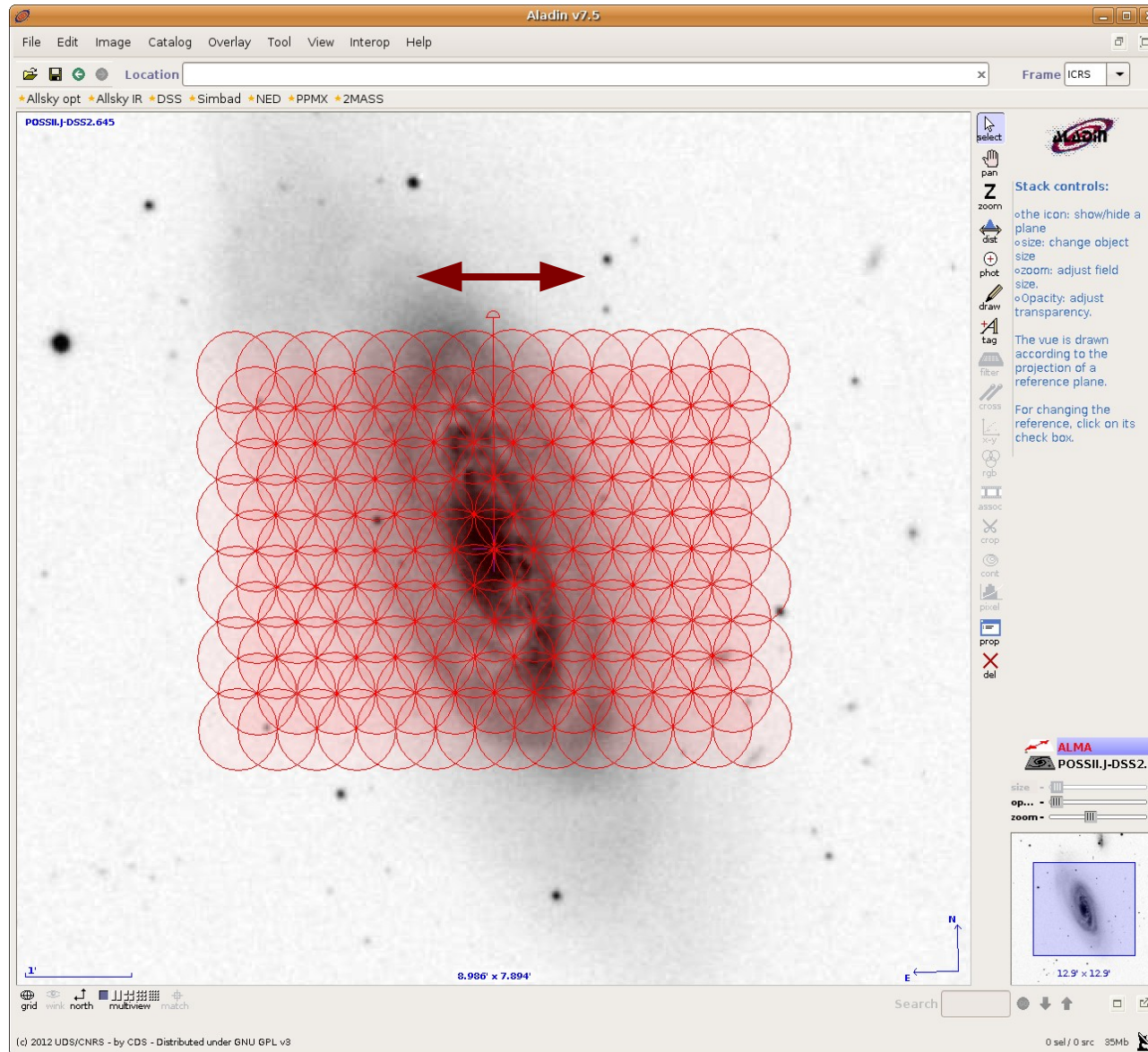
Select the ALMA field of view and submit

You can choose the ALMA band and the size of the **mosaic** you want to observe

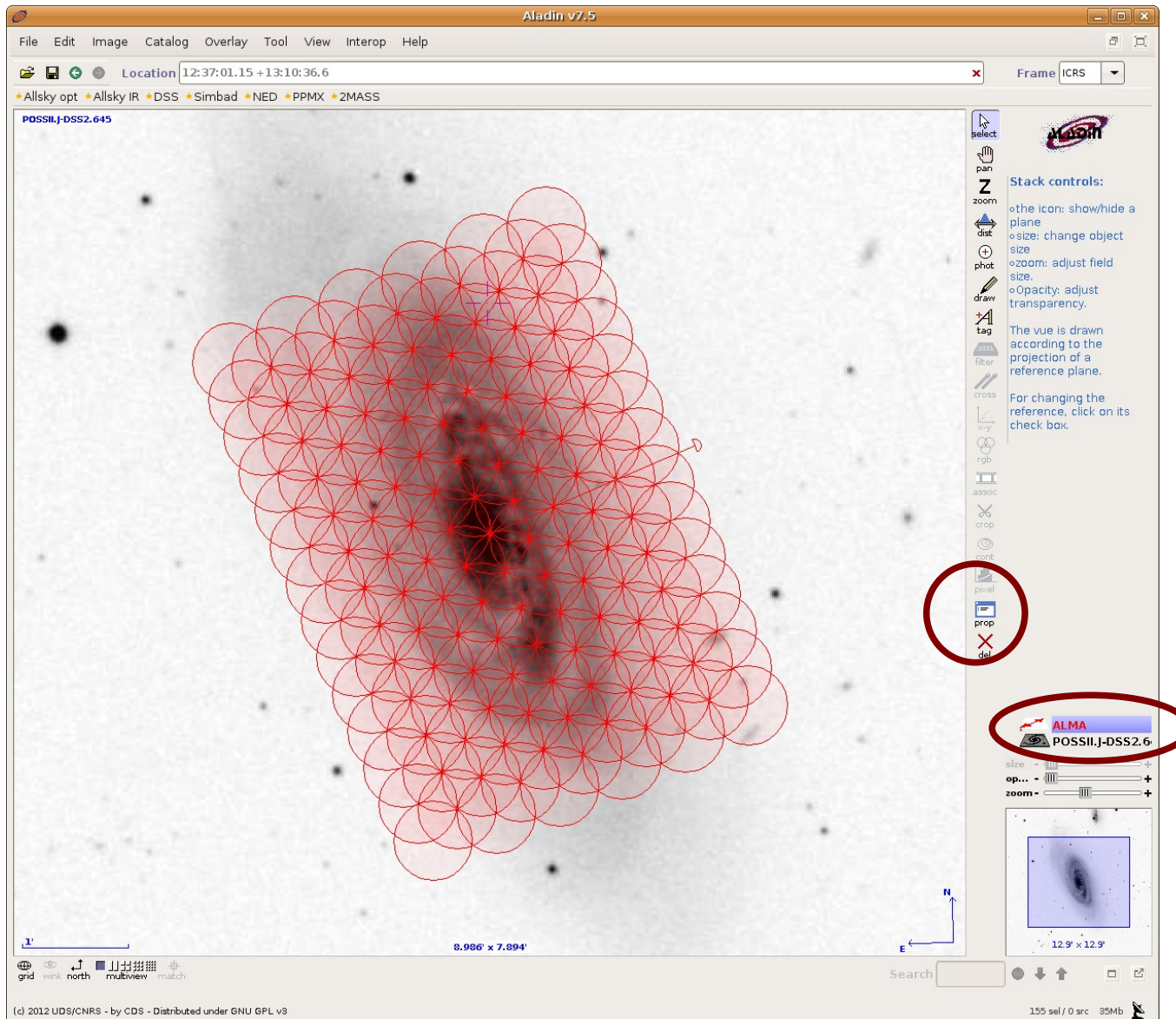
Chose your ALMA band and the size of the **mosaic**



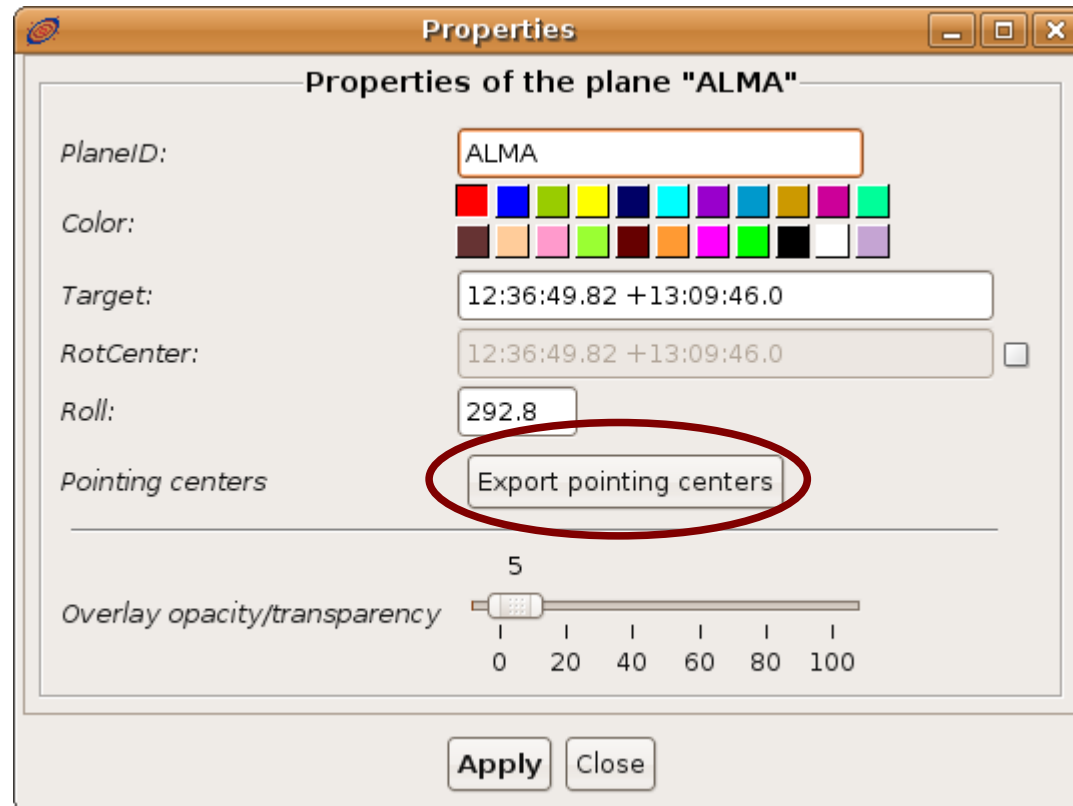
# You can shift or rotate the ALMA mosaic



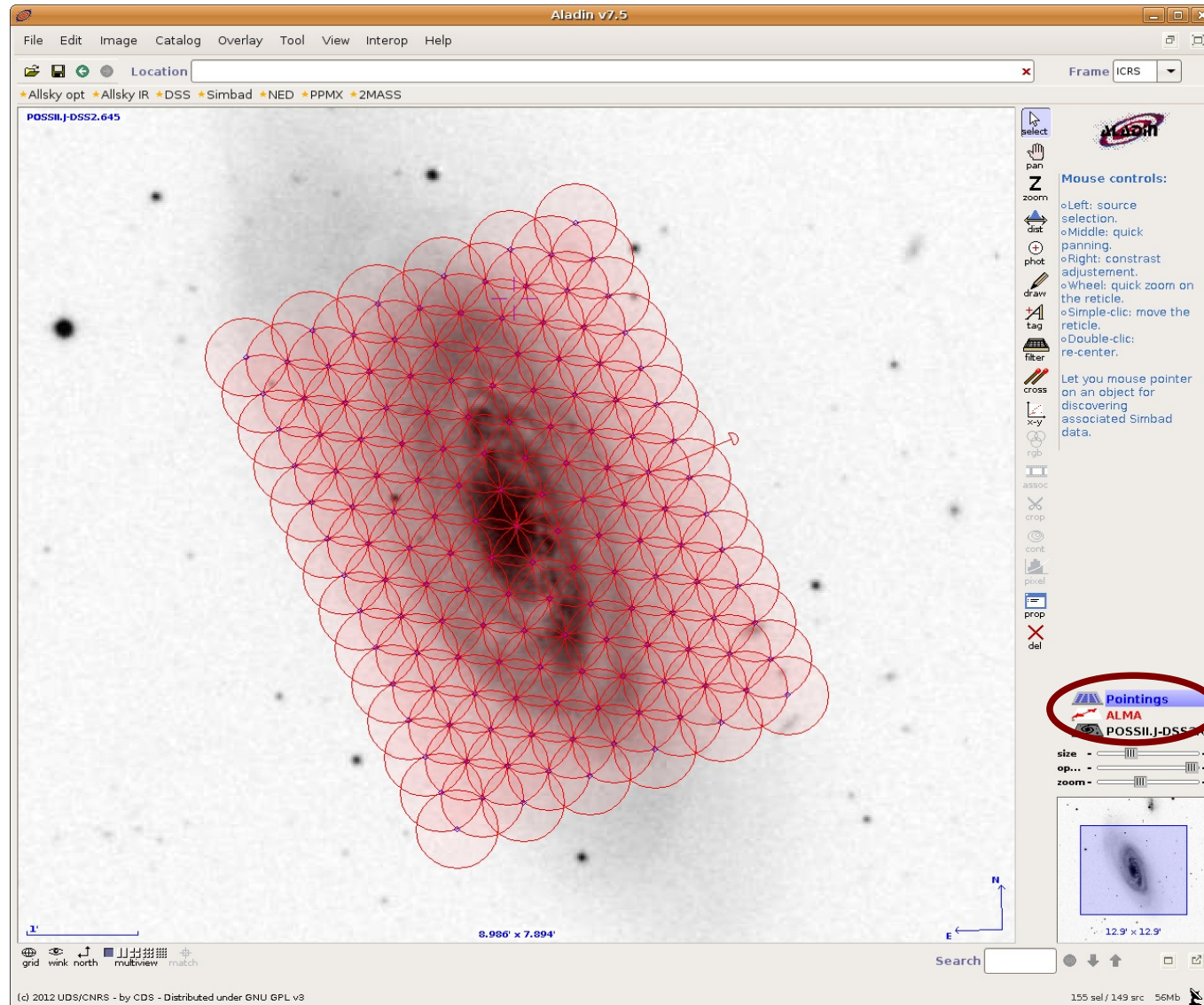
Select the Aladin image plane with the ALMA footprint by clicking on the plane; then click on properties



You can chose the color, rotation angle, and opacity of the ALMA footprint  
Click on 'Export pointing centers' to get the coordinates of the pointings



A new plane containing the pointing positions appears  
Click on this plane to make it active





Grab the positions with the cursor on the image to make them visible in the lower part of the Aladin window

The easiest way to get the coordinates is a copy and paste

Alternatively, you can have the positions in a separate window

The screenshot displays the Aladin v7.5 interface. The main window shows a star field with numerous green 'x' markers. A red arrow points from the bottom-left corner of the main window to a table of coordinates. Another red arrow points from the bottom-right corner of the main window to a separate window titled 'Aladin java measurements frame'. This separate window also displays a table of coordinates. Both tables list RA and Dec values for various stars.

RA	Dec
189.20758	13.16278
189.19740	13.16694
189.21776	13.15861
189.18722	13.17111
189.22794	13.15445
189.20373	13.16772
189.20126	13.16200
189.21391	13.16356
189.21144	13.15783
189.19355	13.17189
189.19108	13.16616
189.22409	13.15939
189.22162	13.15367
189.18336	13.17605
189.18090	13.17033
189.23427	13.15522
189.23180	13.14950
189.21005	13.16850
189.20511	13.15705
189.19987	13.17267
189.19493	13.16122
189.22023	13.16434
189.21529	13.15289
189.18969	13.17683
189.18475	13.16538
189.23042	13.16017
189.22547	13.14872